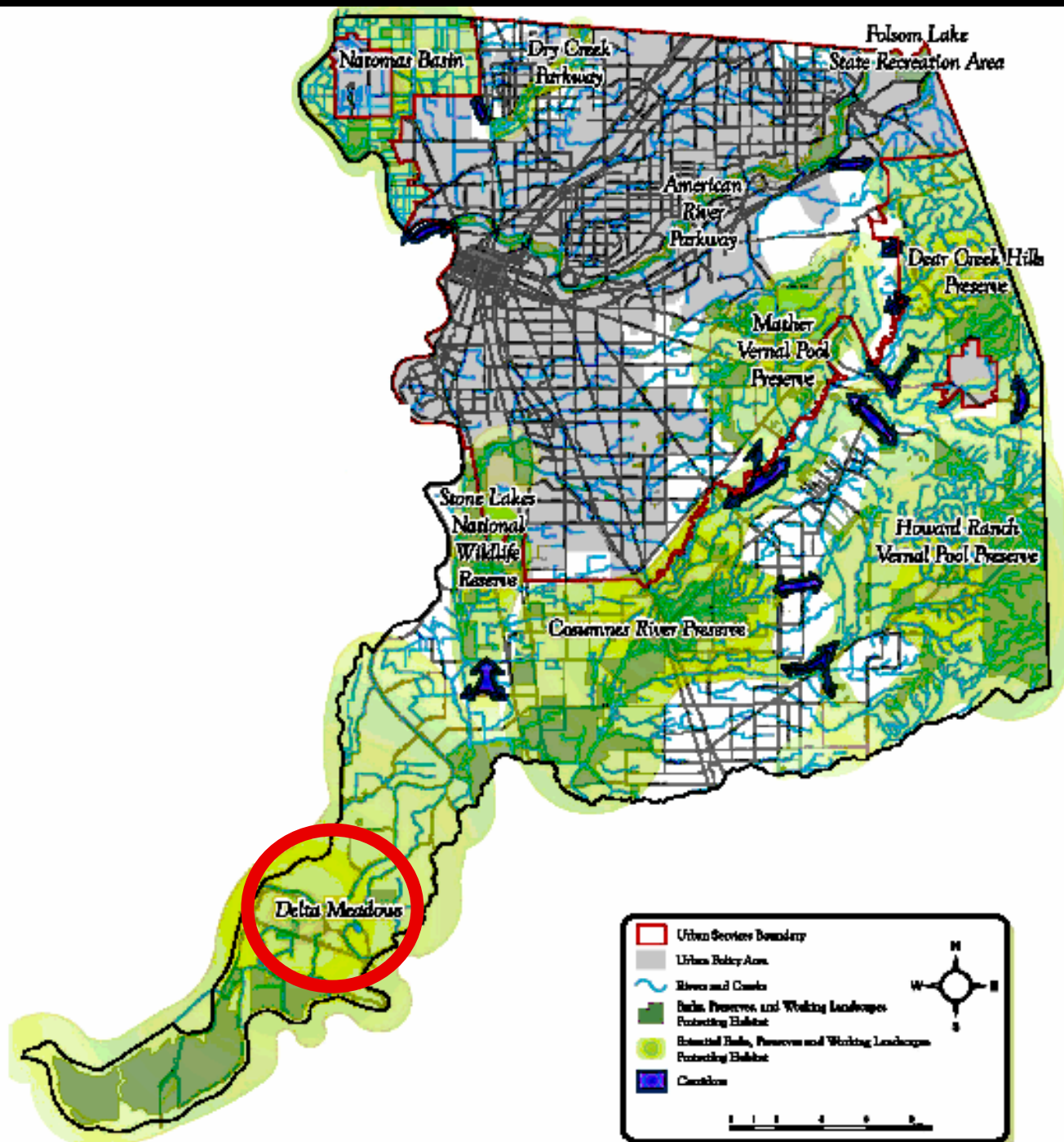


# ***CALIFORNIA HEARTLAND PROJECT***

*PRESERVING OUR NATURAL AND AGRICULTURAL LEGACY*



*Photo Courtesy Jude Lamare*



	Urban Services Boundary
	Urban Policy Area
	Rivers and Canals
	Delta Preserves and Working Landscapes Protecting Habitat
	Essential Delta, Preserves and Working Landscapes Protecting Habitat
	Canals

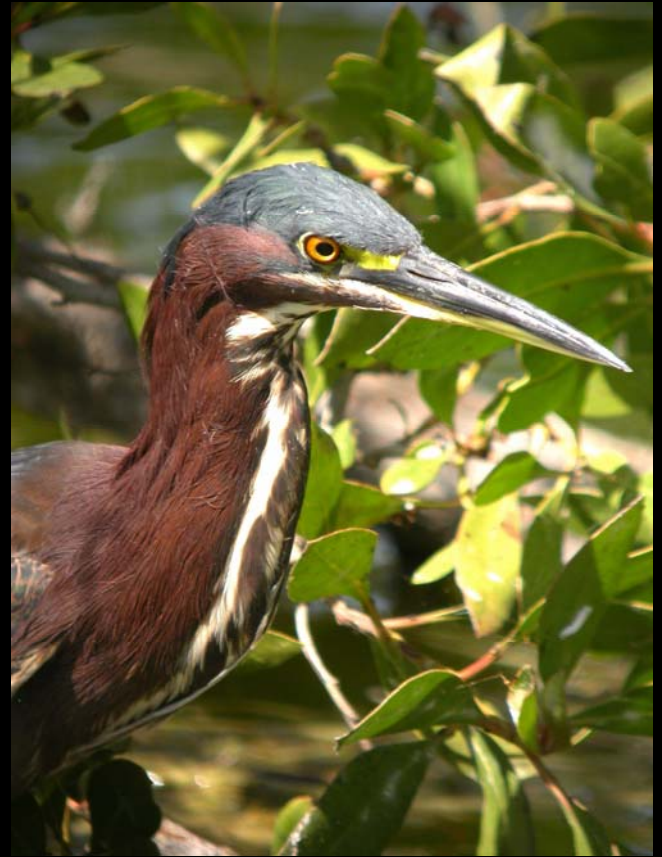
Scale: 0 1 2 4 8 Miles

North Arrow

*DELTA MEADOWS-TULE MARSHES*



*Semipalmated Plover*

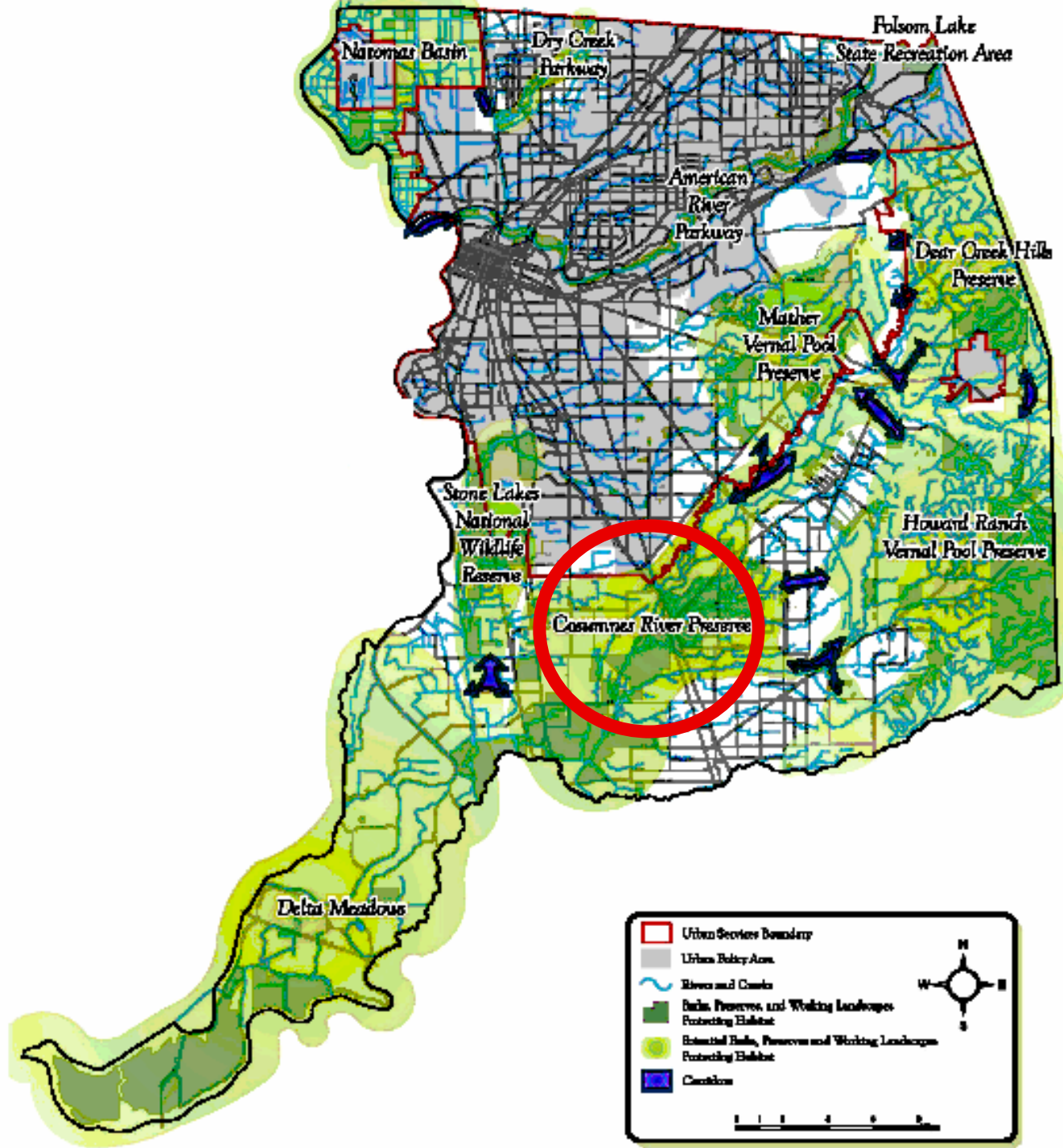


*Green Heron*

***DELTA MEADOWS-TULE MARSHES***



*Photo by Cosumnes River Preserve Staff*



*COSUMNES RIVER PRESERVE—VALLEY OAK FOREST*



*Photo by Cosumnes River Preserve Staff*

***COSUMNES RIVER PRESERVE—VALLEY OAK FOREST***



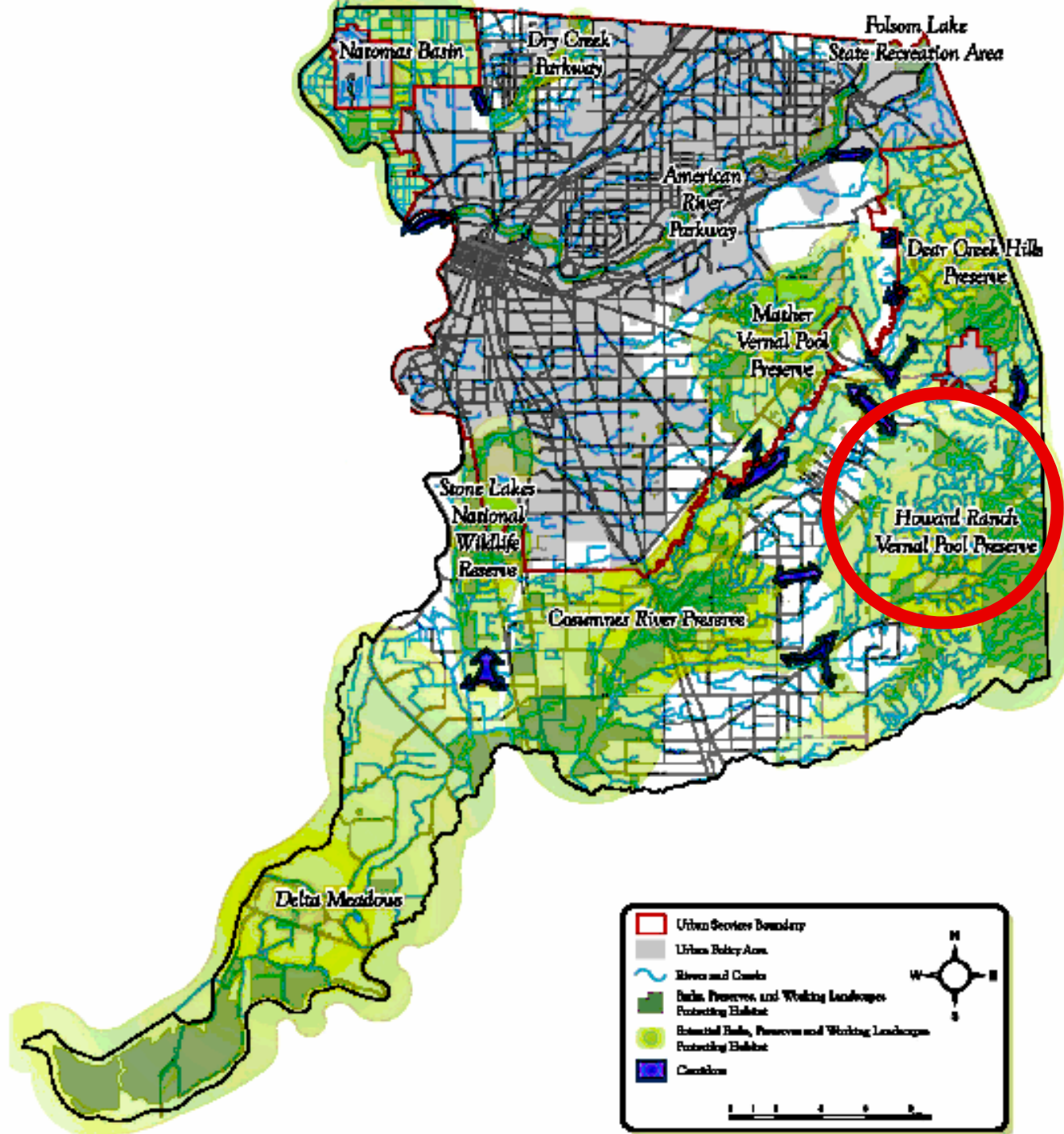
*Photo by Cosumnes River Preserve Staff*

*COSUMNES RIVER PRESERVE—VALLEY OAK FOREST*



*Photo by Cosumnes River Preserve Staff*

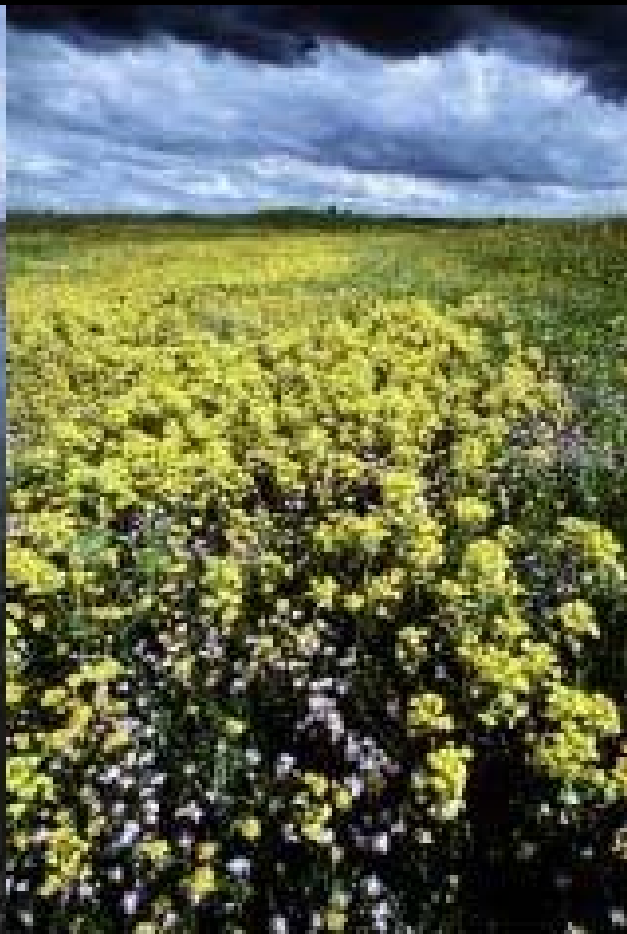




***HOWARD RANCH AND MATHER FIELD PRESERVE—VERNAL POOLS AND PRAIRIE***



*Winter*  
**Wet Phase**



*Spring*  
**Flowering Phase**



*Summer/Fall*  
**Dry Phase**

*HOWARD RANCH AND MATHER FIELD PRESERVE—VERNAL POOLS AND PRAIRIE*



*Photo by Cosumnes River Preserve Staff*

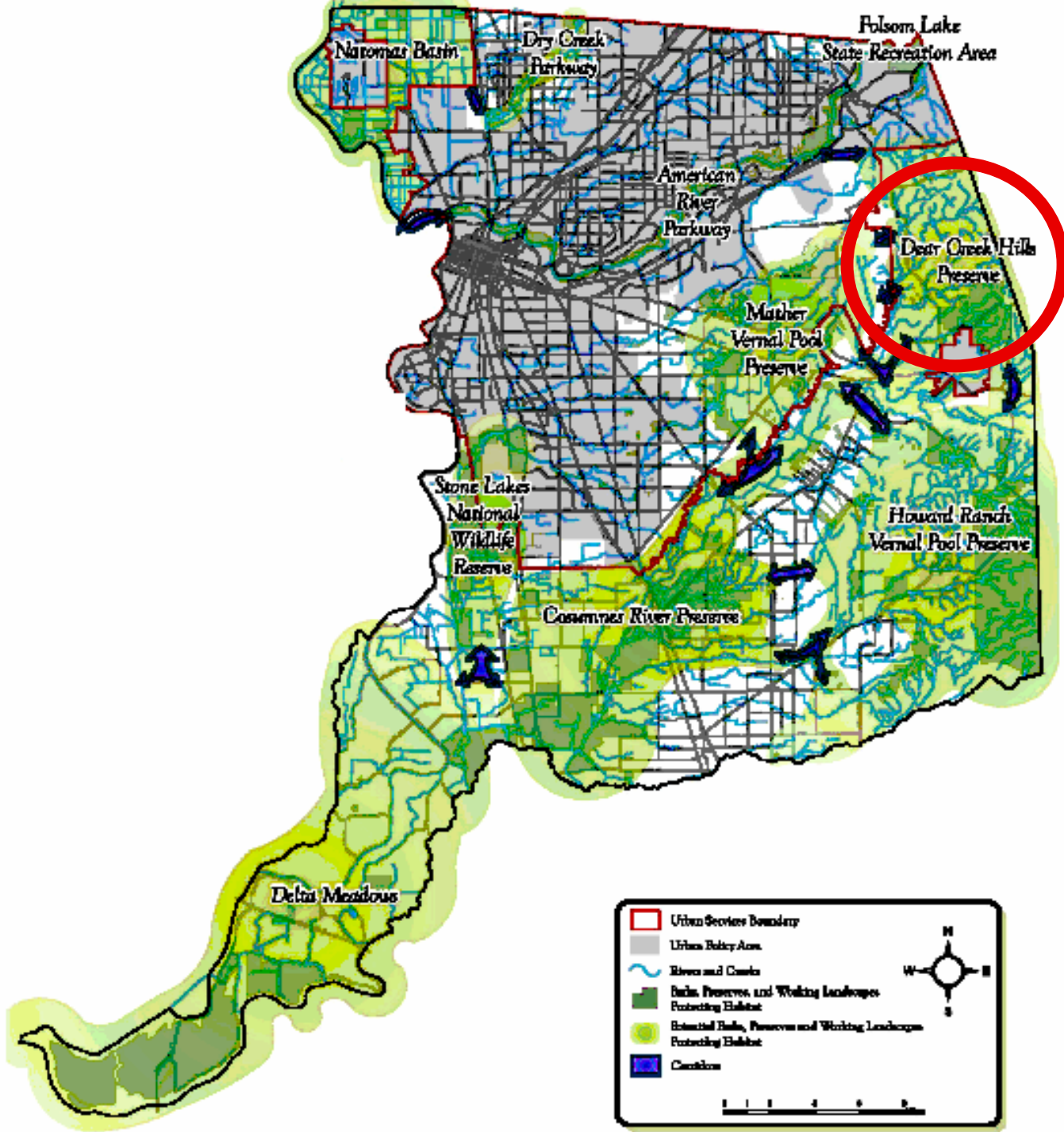
*HOWARD RANCH AND MATHER FIELD PRESERVE—VERNAL POOLS AND PRAIRIE*



*American Kestrel Photo by Chris Conard*



*Photo by Cosumnes River Preserve Staff*



*DEER CREEK HILLS PRESERVE—BLUE OAK WOODLAND AND PRAIRIE*



*Photo by Randy Smith*

***DEER CREEK HILLS PRESERVE—BLUE OAK WOODLAND AND PRAIRIE***



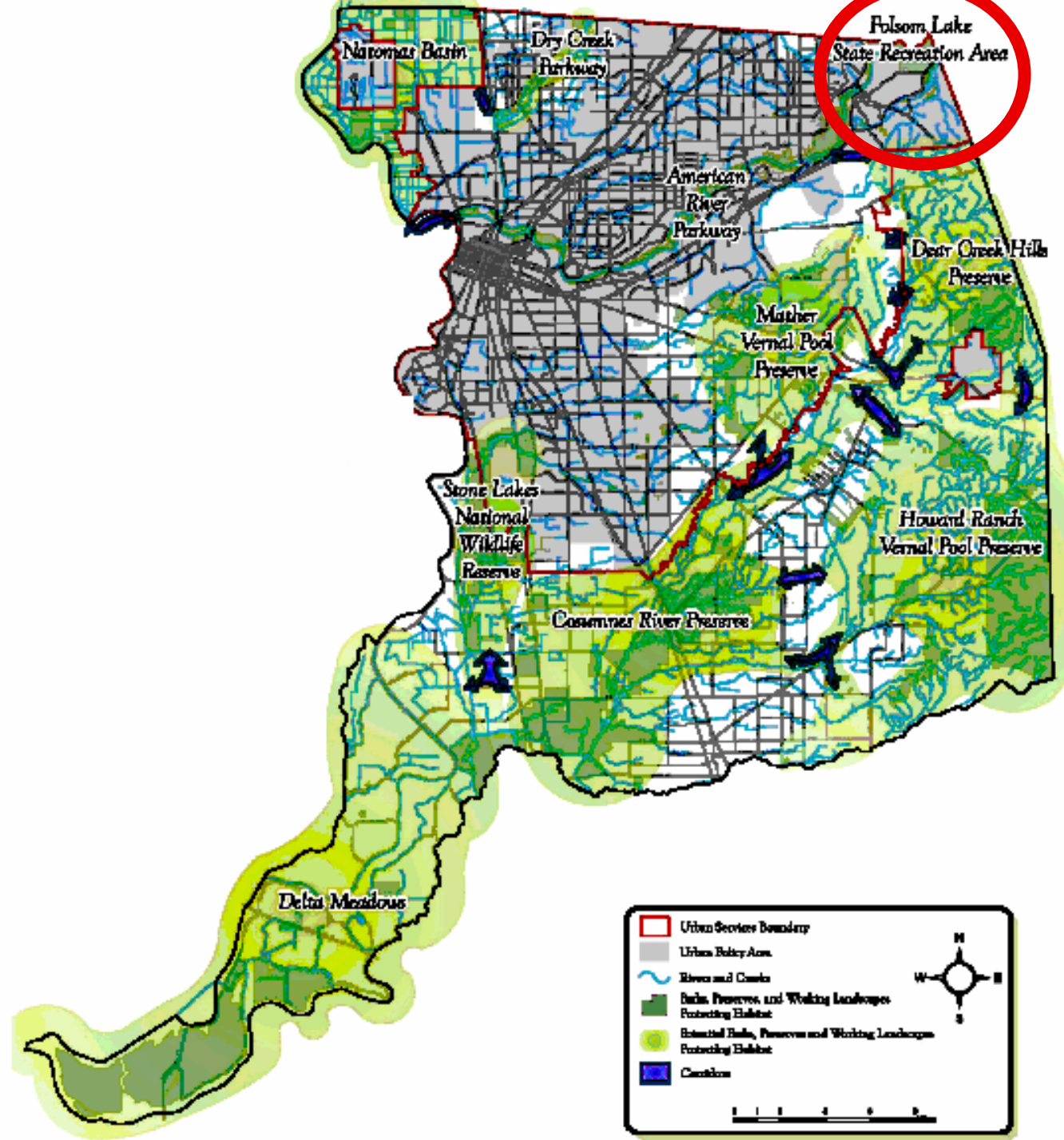
*Photo by Randy Smith*

*DEER CREEK HILLS PRESERVE—BLUE OAK WOODLAND AND PRAIRIE*



*Photo by Randy Smith*





*FOLSOM LAKE STATE RECREATION AREA - CHAPARRAL*



*Photo by Susan Torguson*

*FOLSOM LAKE STATE RECREATION AREA*



*Photo by Randy Smith*

*FOLSOM LAKE STATE RECREATION AREA—CHAPARRAL*



*Sage Sparrow*



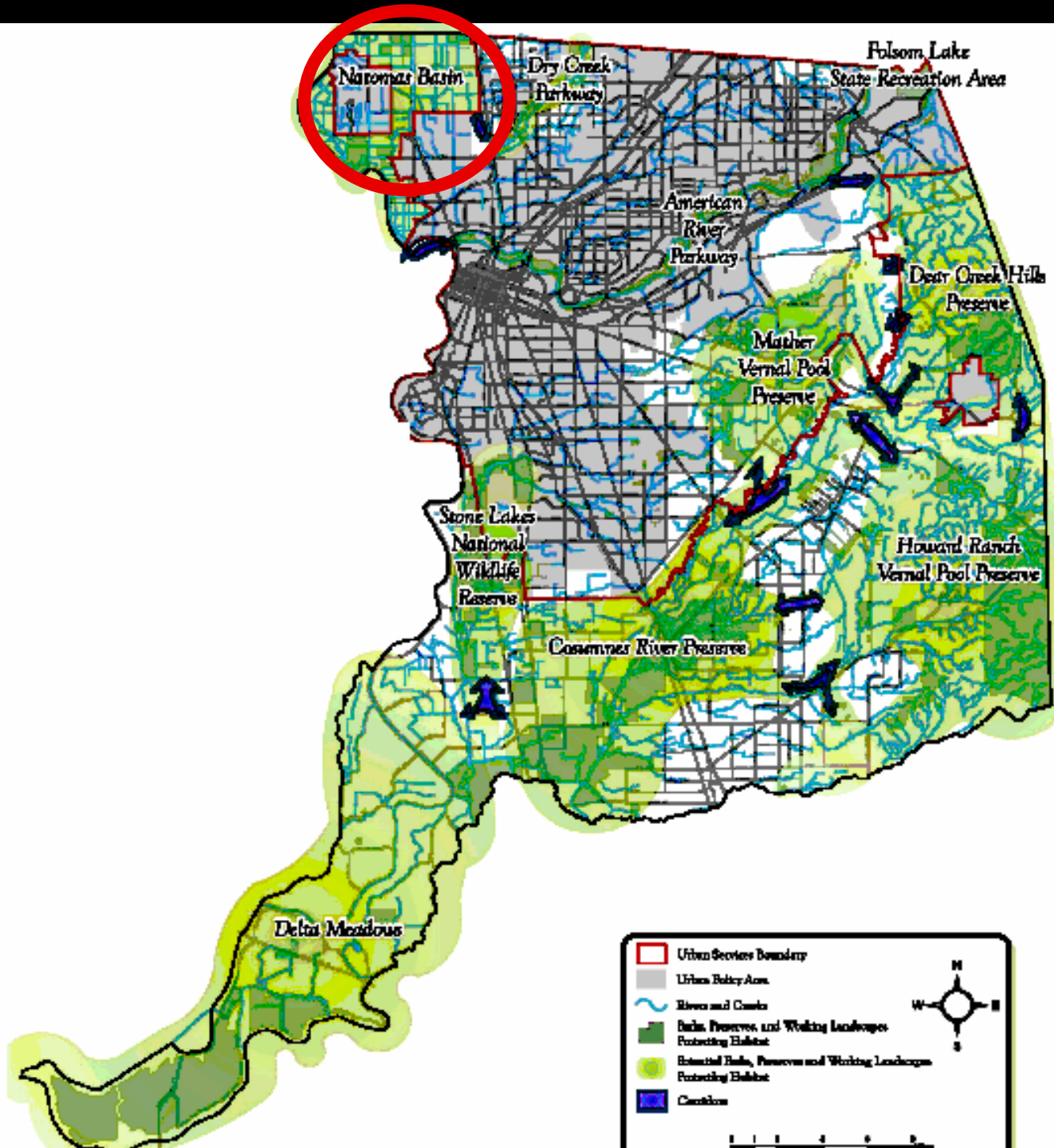
*Wrentit*



*Blue-Gray Gnatcatcher*



*California Thrasher*



# ***NATOMAS BASIN***



*Photo Courtesy Jude Lamare*

# ***NATOMAS BASIN***



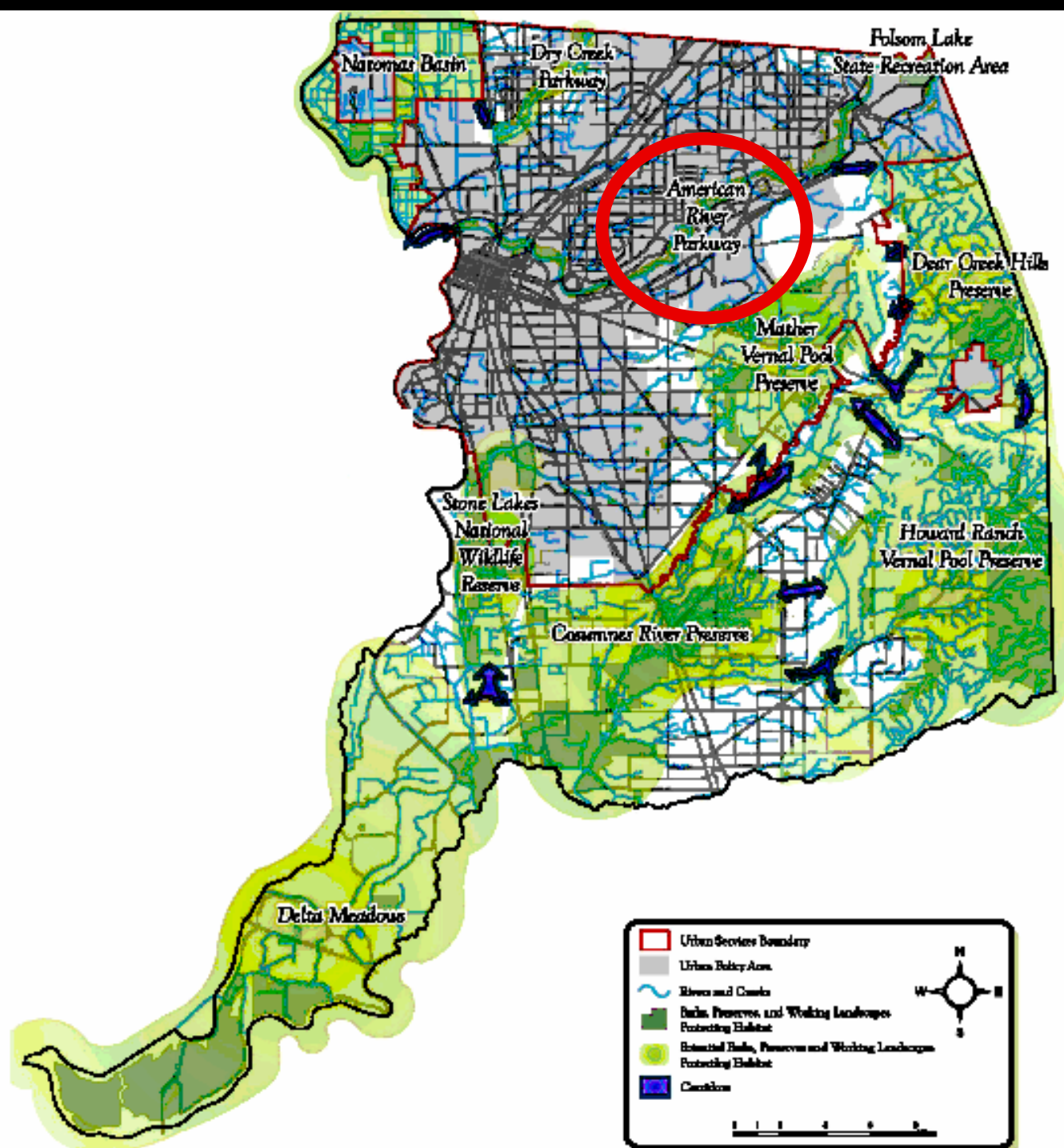
*Photo Courtesy Jude Lamare*


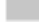




***NATOMAS BASIN***





*Photo Courtesy Jude Lamare*





	Urban Service Boundary
	Urban Policy Area
	Rivers and Creeks
	Baths, Preserves, and Working Landscapes Protecting Habitat
	Estuarial Beds, Preserves and Working Landscapes Protecting Habitat
	Canal





*AMERICAN RIVER PARKWAY-RIVERINE HABITAT*



*Photo by Randy Smith*

# *AMERICAN RIVER PARKWAY-RIVERINE HABITAT*



*Photo by Randy Smith*

*AMERICAN RIVER PARKWAY-RIVERINE HABITAT*



*Photo by Randy Smith*

*AMERICAN RIVER PARKWAY-RIVERINE HABITAT*



*Photo Courtesy the American River Parkway Foundation*



Habitat 2020 is a committee of environmental organizations collaborating on common issues in and affecting Sacramento County.

The member organizations are:

Sacramento Audubon,  
SARA- Save the American River Association,  
Sacramento Urban Creeks Council,  
CNPS- California Native Plant Society- Sac Valley Chapter,  
ECOS-Environmental Council of Sacramento,  
Sierra Club- Mother Lode Chapter,  
Friends of Swainson's Hawk, and  
SOS Cranes- Save Our Sandhill Cranes.