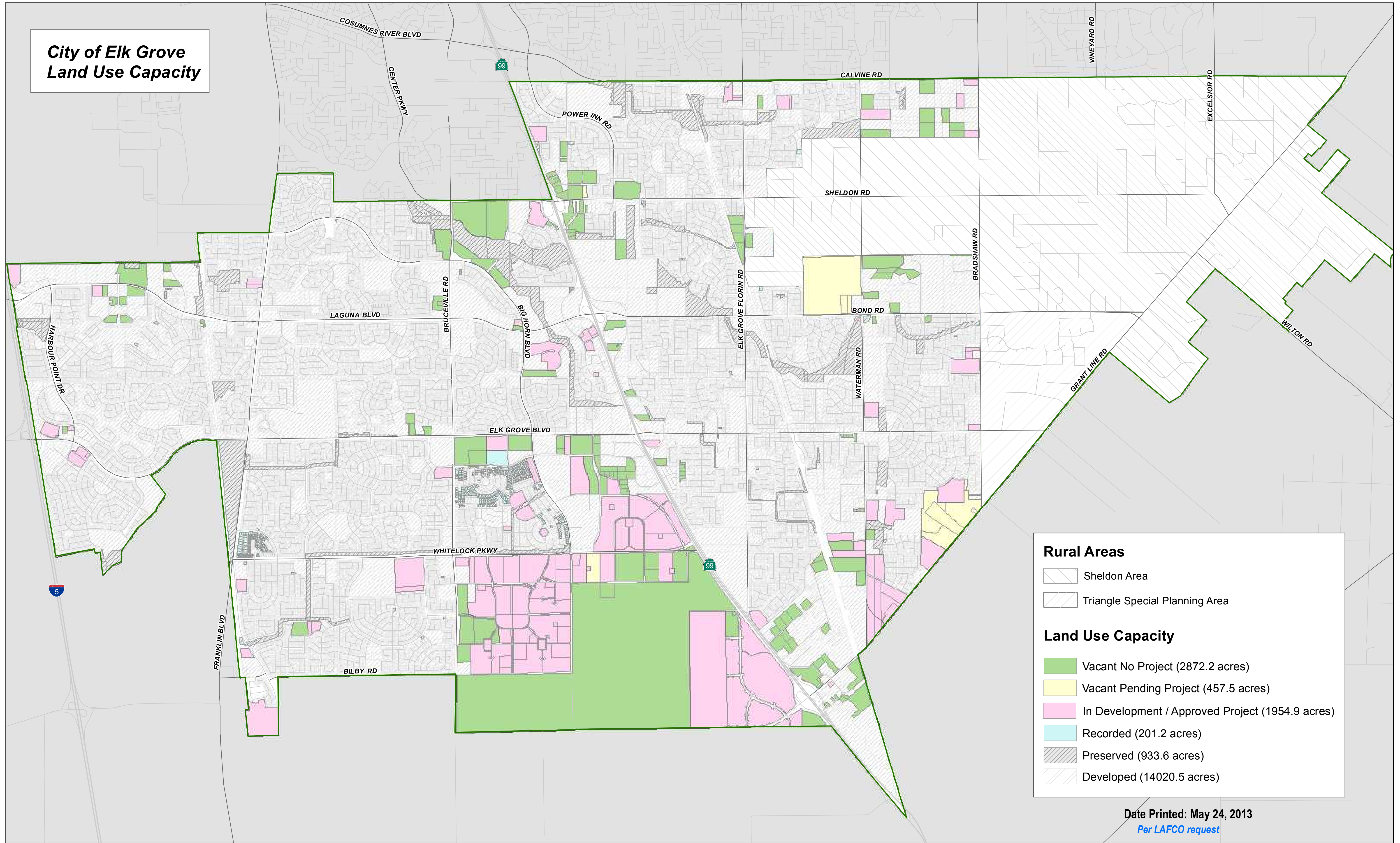





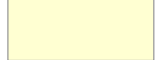




**City of Elk Grove  
Land Use Capacity**



**Rural Areas**

-  Sheldon Area
-  Triangle Special Planning Area

**Land Use Capacity**

-  Vacant No Project (2872.2 acres)
-  Vacant Pending Project (457.5 acres)
-  In Development / Approved Project (1954.9 acres)
-  Recorded (201.2 acres)
-  Preserved (933.6 acres)
-  Developed (14020.5 acres)

Date Printed: May 24, 2013  
Per LAFCO request