

The South Sacramento Habitat Conservation Plan (SSHCP)

Cities of Rancho Cordova, Elk Grove, & Galt, Sacramento County, &
Sacramento Regional County Sanitation District, Capital SouthEast
Connector



SSHCP

Benefits of the SSHCP

- Predictable, streamlined permitting process
- Defines mitigation requirements
- Ensures natural resources protection
- Allows for a regional conservation strategy

Benefits of the SSHCP

- Meets Conditions of Freeport water project service
- Supports ability to meet sewer service needs
- Facilitates public and private development

Permits/Agreements

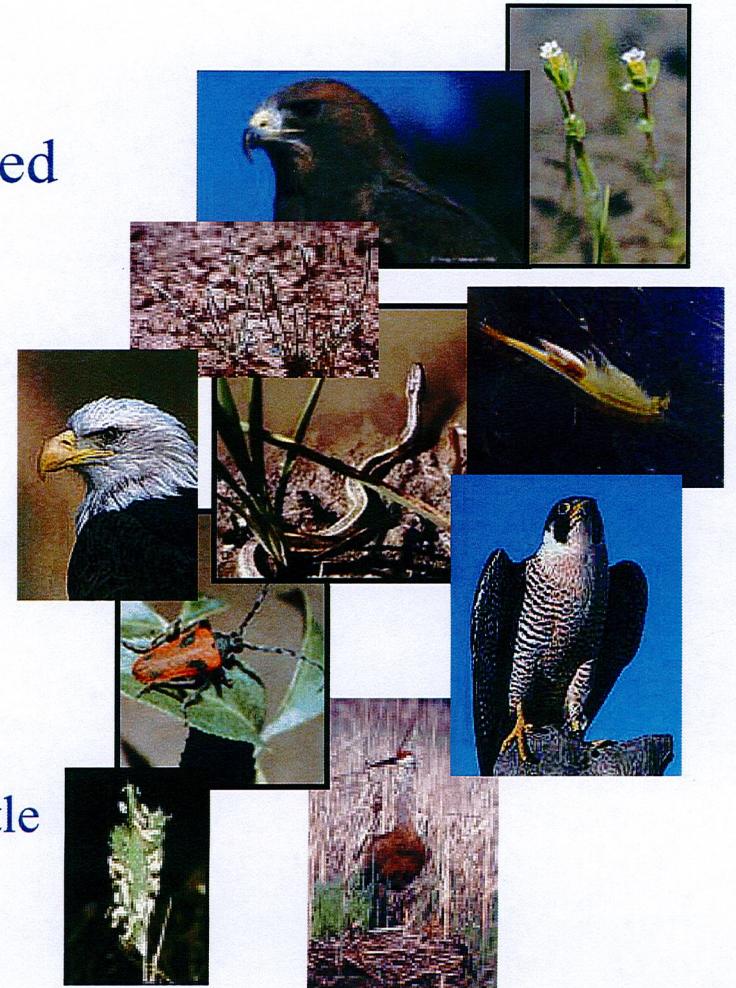
- State & Federal ESA
- CWA Section 404/401 permits
- CEQA/NEPA
- Long-term streambed alteration agreements

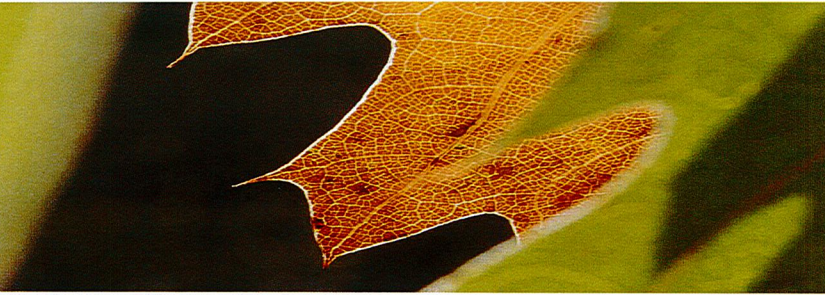
SSHCP

Covered Species

30 total, 10 State/Federally Listed

- Vernal Pool Fairy Shrimp
- Vernal Pool Tadpole Shrimp
- Swainson's Hawk
- Giant Garter Snake
- California Tiger Salamander
- Sacramento Orcutt Grass
- Slender Orcutt Grass
- Boggs Lake Hedge-Hyssop
- Valley Elderberry Longhorn Beetle
- Greater Sandhill Crane



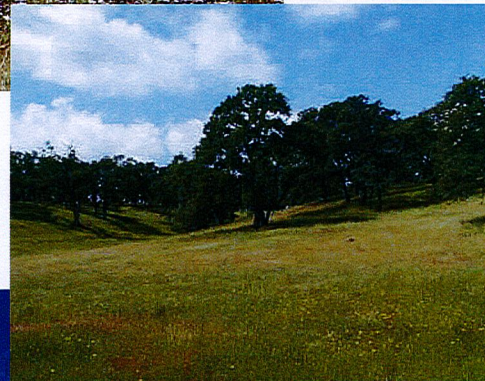


Covered Species (continued)

- Dwarf Downingia
- Ahart's Dwarf Rush
- Legenere
- Pincushion Navarretia
- Sanford's Arrowhead
- Mid-Valley Fairy Shrimp
- Ricksecker's Water Scavenger Beetle
- Western Spadefoot
- Western Pond Turtle
- Cooper's Hawk
- Tricolored Blackbird
- Western Burrowing Owl
- Ferruginous Hawk
- Northern Harrier
- White-Tailed Kite
- Loggerhead Shrike
- Pallid Bat
- Western Red Bat
- Yuma Myotis Bat
- American Badger



Habitat Types

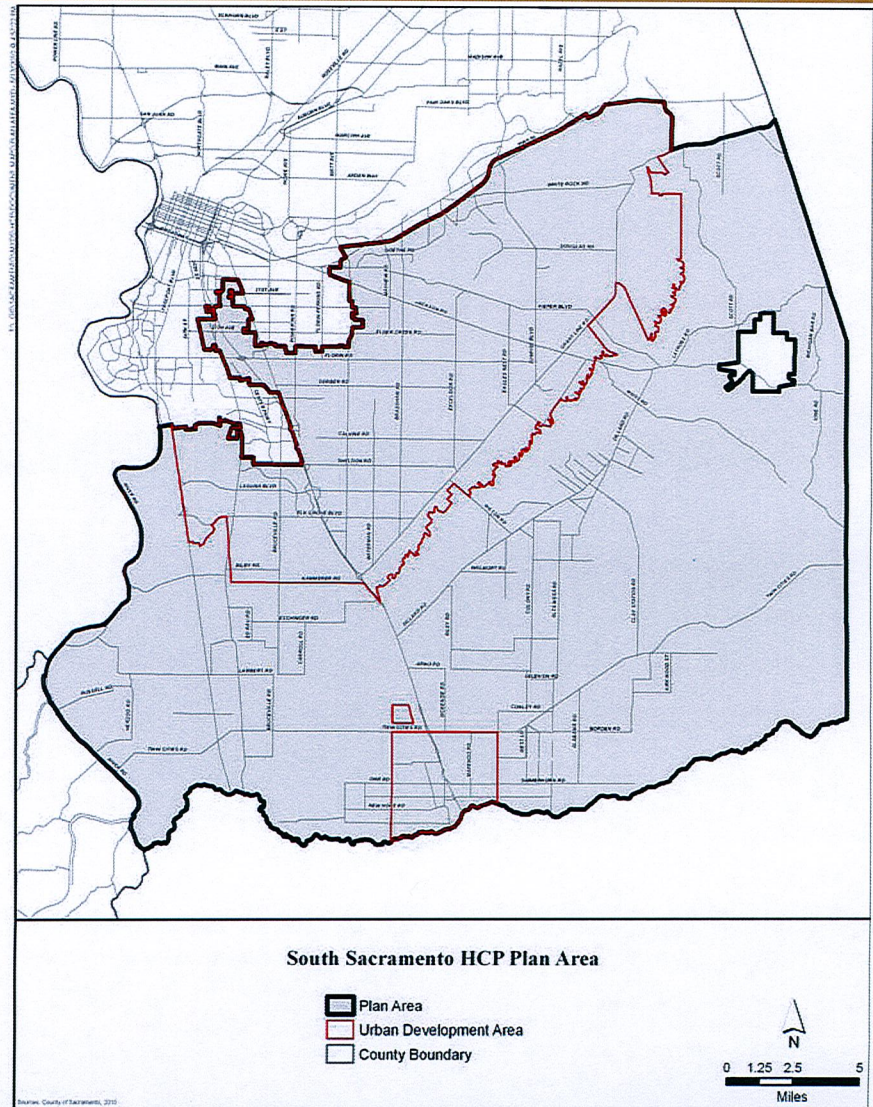


- Agricultural Lands
- Riparian / Stream
- Upland Grassland
- Vernal Pool & Associated Uplands
- Wetlands, Ponds & Lakes
- Woodlands

SSHCP

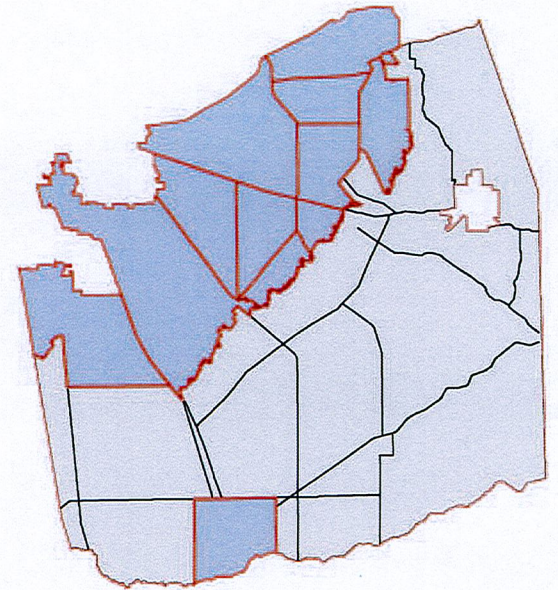
Plan Area:

Plan encompasses
374,000 acres



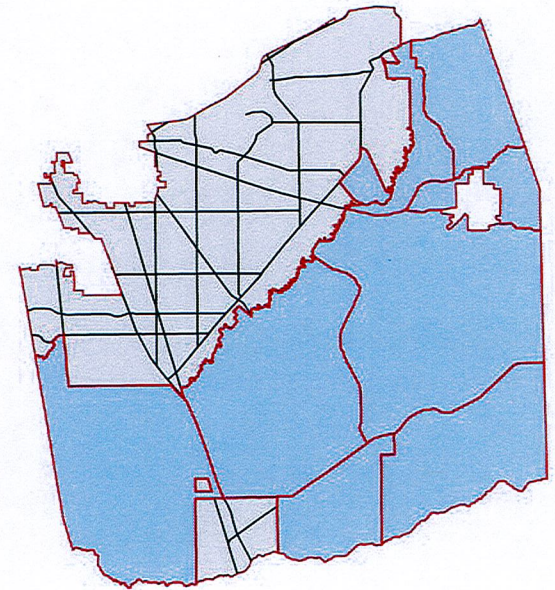
Urban Development Area (UDA)

- UDA = adopted General Plans for each jurisdiction
- Majority of Plan's "take" occurs in UDA
- Predictable, streamlined permitting process
- Anticipates Galt/EG SOIs



Outside the UDA

- Coordinate mitigation requirements
- Address needs of various species & habitat types
- Does not change existing zoning
- Allow some infrastructure projects



Conservation Strategy

- Hybrid Hard-line/criteria approach
 - Hard line used where there is a current project proposal.
 - Criteria used everywhere else. Outside UDA is entirely criteria driven.
- Preservation
 - The SSHCP will protect approximately 40,000 acres.
 - Zones 1 – 3 are within the UDA and Mather Core Recovery Area. Focus on vernal pool preservation.
 - Zones 4 – 7 are located outside the UDA.

Conclusion

- Relation to BDCP
- Process & Schedule
 - Near term – conclude Conservation Strategy in principle
 - EIR/EIS – 18 month process
 - Adoption – 6 to 12 month process