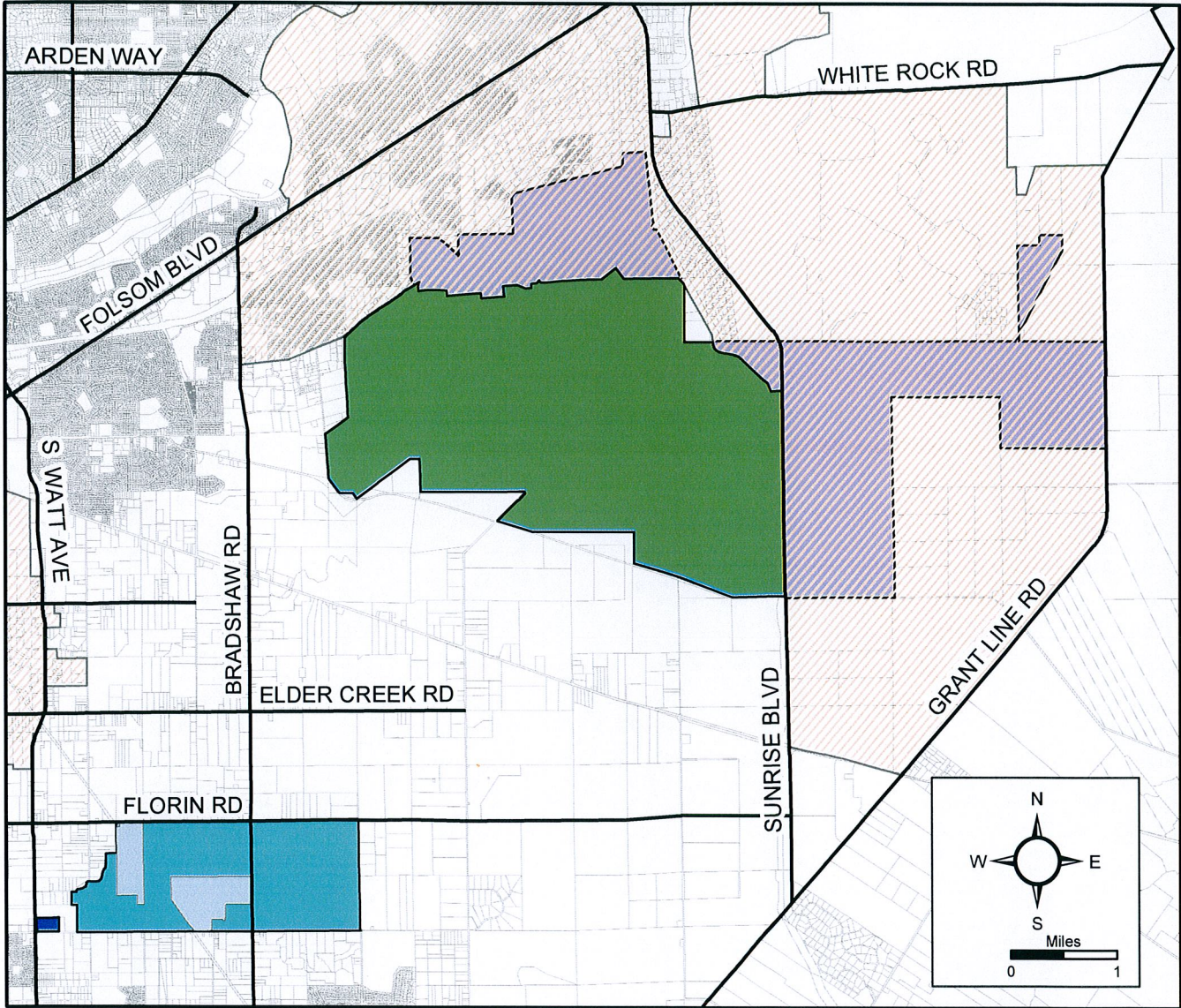


BOUNDARY MAP COUNTY SERVICE AREA NO. 10

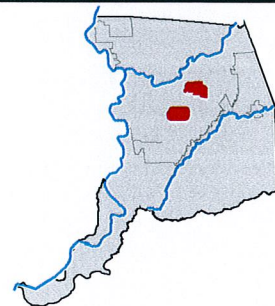


Legend

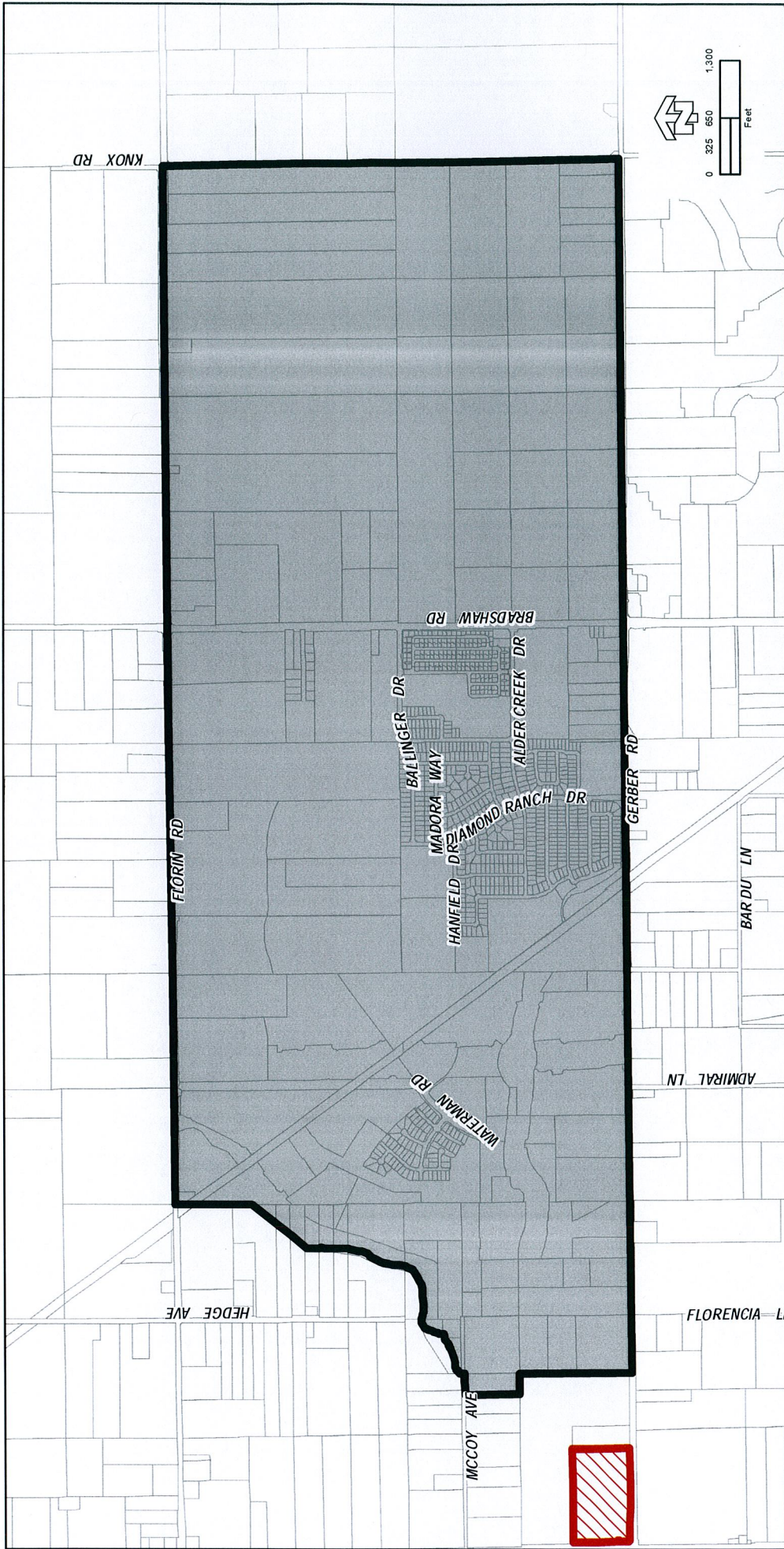
- Proposed Annexation
- CSA 10 Non Activated
- Detached Territories
- CSA 10 Zone 3 Service Charge Activated
- CSA 10 Zone 3
- CITIES

County Service Area No. 10



Supervisory District: 5 - Nottoli



ATTACHMENT 1 COUNTY SERVICE AREA #10 Benefit Zone #3 PROPOSED ANNEXATION VICINITY MAP



Legend

-  APN : 065-0080-101 (Proposed Annexation)
-  CSA10, Benefit Zone #3

District: COUNTY SERVICE AREA #10 Benefit Zone #3
 Supervisorial District: 5 - Nottoli

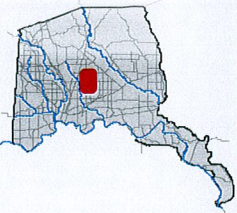


Plate EGR -4 Aerial of Project Site



Plate EGR -5 Existing General Plan Designation

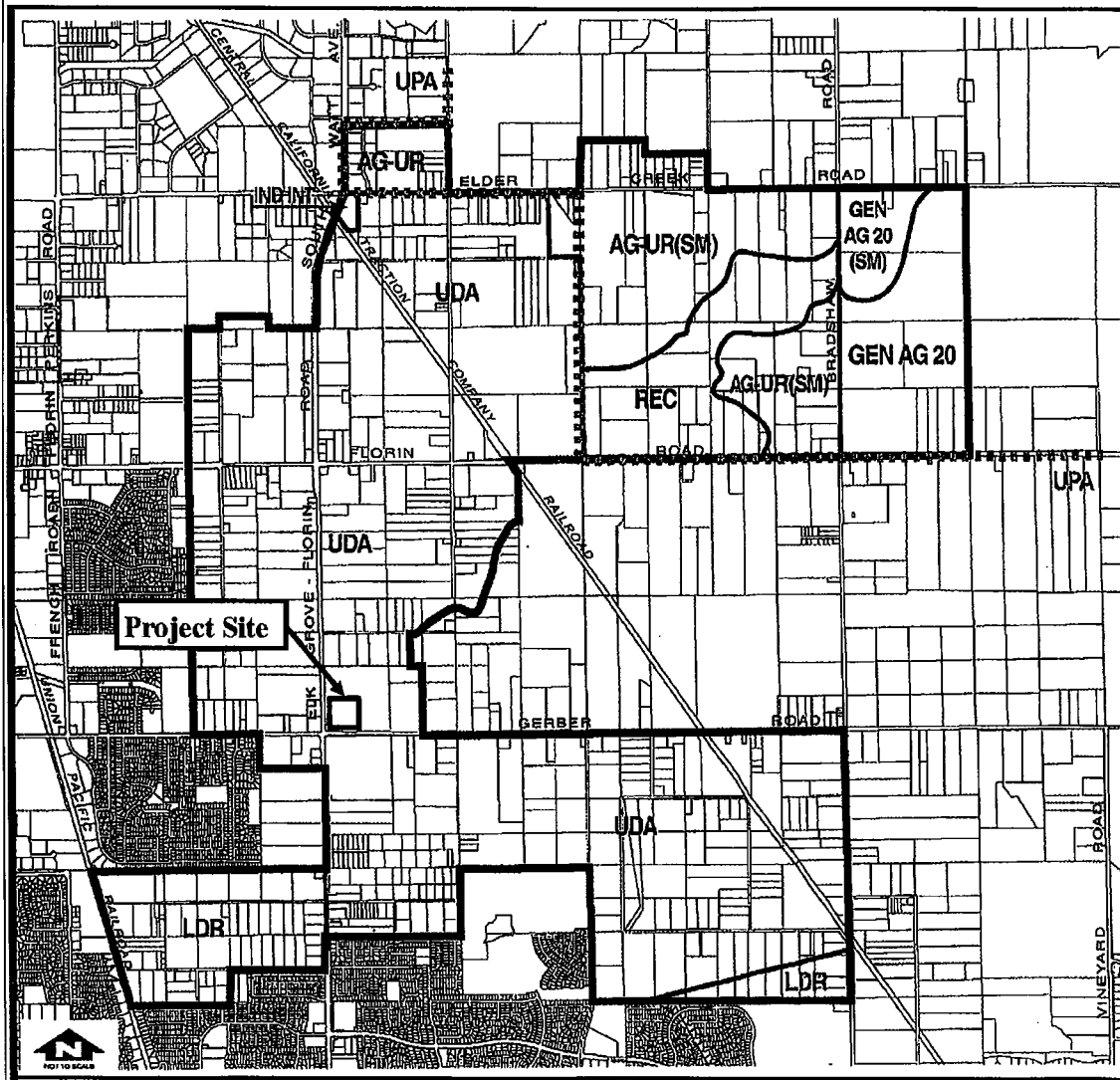


Plate EGR-1: Project Location and Existing Zoning

